

Duro-M - 3-Backen, Base and top jaws, Cylindrical center mount (DIN 6350, Form A)

APPLICATION

Conventional clamping horizontal and vertical turning machines, as well as milling machines, rotary tables and dividing attachments. Predominantly for use in single or small batch production or in repair shops.
Clamping of rotationally symmetrical parts for turning and milling

TYPE

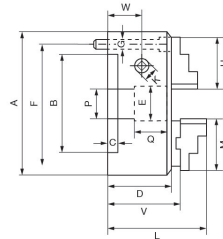
The Duro-A is a manually geared scroll chuck with through hole. that can be clamped automatically (hydraulically) by a CNC machine. It is mainly used for turning cylindrical and disc-shaped blanks.

CUSTOMER BENEFITS

- ⊕ High concentricity up to 0.02
- ⊕ Jaws with gunmetal finish
- ⊕ Minimal interference contour
- ⊕ Optimum force transmission
- ⊕ Drip edge for coolant

TECHNICAL FEATURES

- Chuck body (and all other components) made of steel
- ENG Zentrisch spannend über Planspirale
- ENG Planspirale im Gesenk geschmiedet und hochvergütet, Gewindeflanken beidseitig geschliffen
- Jaws in chuck ground out for concentricity
- Zero drive determined in the factory as precision drive
- The maximum permissible speed has been fixed so that 1/3 of the gripping force is available as residual gripping force if the maximum gripping is applied on the chuck is fitted with its heaviest jaws. The jaws may not project beyond the outside diameter of the chuck. The chuck must be in perfect condition. The specification DIN 6386 Part 1 shall be observed.
- Clamping force to DIN 6350: The gripping force is the sum total of all jaw forces acting radially on the stationary workpiece. The specified gripping forces are approximate values. They apply to chucks in a perfect condition which have been lubricated with RöhM F80 grease.
- Scope of supply: chuck, operating key, jaws



A09 603

Size	100	125	160	200	250	315	400	500	630	700	800	1000	1250
A [mm] outer diameter	100	125	160	200	250	315	400	500	630	700	800	1000	1250
B Spindle mount	70	95	125	160	200	260	330	420	545	610	710	910	910
D [mm] Chuck height	50	56	65	73.5	82	95	105	120	135	147	147	157	157
E [mm] Bore (max.)	20	32	42	55	76	103	136	190	240	310	380	460	550
F [mm] Diameter pitch circle fixing screw	83	108	140	176	224	286	362	458	586	660	760	950	950
G Thread mounting screws	3xM8	3xM8	3xM10	3xM10	3xM12	3xM16	3xM16	6xM16	6xM16	6xØ22	6xØ22	6xØ26	6xØ26
K [mm] Size chuck key	8	9	10	11	12	14	17	19	19	19	19	24	24
M [mm] Base jaw length	47	56	66.7	79.5	95	109.5	127	127	127	210	210	210	210
Actuation (torque wrench) [Nm]	60	80	110	140	150	180	240	260	280	280	300	450	450
Clamping force [kN] max., total	27	31	47	55	63	69	92	100	105	105	110	115	115
Speed [min-1], max. perm.	6300	5500	4600	4000	3000	2300	1800	1300	850	800	700	560	450
Item no.	R:14961_8	R:14961_8	R:14961_8	R:14961_8	R:14961_8	R:14961_8	R:14961_8	R:14961_8	R:14961_8	R:14961_8	R:14961_8	R:14961_8	R:14961_80568▲